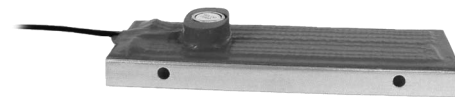
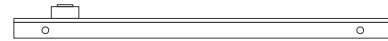
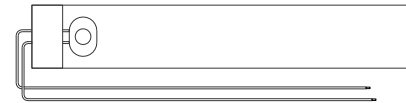




3522 Central Pike, Building 203 · Hermitage, TN 37076

Telephone: (615) 834-4044 · Fax: (615) 834-5834

www.prothermind.com



Silicone Rubber Enclosure Heater Installation Instructions

Safety Information

Your Enclosure Heater is designed with function, reliability, and safety in mind. It is the user's responsibility to install it in conformance with local electrical codes.

Warnings

To avoid personal injury:

- Do not use in the presence of flammable or combustible materials, fire or explosion may result.
- Never immerse the heater in water or any other fluid.
- Refer servicing to qualified personnel only.
- Never handle the heater while it is in operation.
- Always disconnect the heater from the power source and allow to cool prior to removing from the enclosure.

Operation

Your Enclosure Heater is designed to provide a long and efficient service life. Overheating, contamination and misuse will greatly reduce the life the heater. Your heater should only be used in dry, non-hazardous areas. Only use heaters within enclosures.

Caution

To avoid damage to the Silicone Rubber Enclosure Heater:

- Never operate the heater without a temperature control device. Failure to use such a device may result in component damage within the enclosure or heater failure.
- Never lift or pull the heater by its leadwires.
- Never operate the heater at temperatures above 232°C (450°F).
- Never cut, punch holes in or otherwise modify the heater.
- Never allow foreign substances to bake on the heater. If spillage of foreign matter occurs, disconnect the heater from the power source and allow to cool. After cooling, clean the heater with a solvent suitable for removing the substance.

Installation

Prior to installing your Enclosure Heater:

- Check for suspected damage to the heater (for example: rips, punctures, etc.).

After you have installed your Enclosure Heater:

- Ensure that there is sufficient clearance between the heater and other components to avoid thermal damage.
- Ensure the heater does not cover another heater or any obstruction it is not designed to fit over.

Mounting your heater onto the enclosure surface:

Your Enclosure Heater is attached to a mounting plate. The mounting plate has two 7/16" (11mm) diameter holes.

Prior to mounting your heater:

1. Find a location within the enclosure where there is sufficient clearance between the heater and other components.
2. Determine whether vertical or horizontal mounting is preferable in the location chosen.
3. If the heater has a built-in thermostat and is to be mounted vertically, then thermostat should be located at the lower end.
4. Use the holes provided to mount the heater onto a sub-panel or to other available mounting surface.

Installing your heater to a power source:

- If your heater does not have a built-in thermostat, then you **MUST** connect the heater to a temperature controller.
- Your heater is designed to operate at a specific voltage. Please refer to the leadwire label for the rated voltage, current and wattage information. Failure to operate the heater at the specified rating could result in damage to the heater, components within the enclosure or personal injury.
- Your heater is non-polarized, so either of the 2 wires may be hooked up to hot or neutral.
- All electrical connections must be made by qualified personnel and in accordance with all applicable codes and regulations.
- Ensure the heater is protected by a properly sized circuit breaker or fuse.